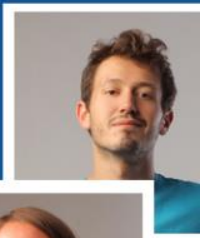
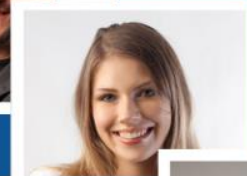
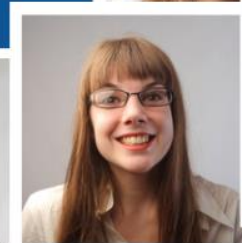
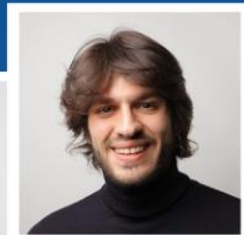
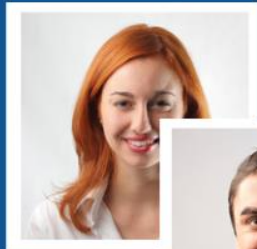
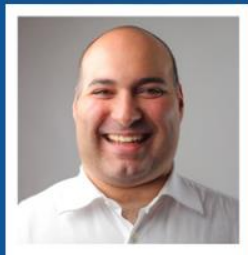


Using ESI Funds for Roma Inclusion

EURoma meeting: Closing the 2007-2013
programming period

23-24 November 2015, Madrid





General Policy Framework on ESF and Roma inclusion

- A clearer focus on Roma inclusion than under the past programming period 2007-2013
- A specific investment priority (IP 9 (ii)) on promoting the "socio-economic integration of marginalised communities such as the Roma"
- IP 9 (ii) part of the larger thematic objective (TO) on social inclusion: at least 20% of MS total ESF envelope earmarked on this objective
- But, ESF intervention for Roma communities through mainstream support under the other IPs of the TO on social inclusion as well as under the TO on employment and education.



General Policy Framework on ESF and Roma inclusion

- The ESF explicitly (but not exclusively) targets marginalised communities, such as the Roma
- ESF intervention aims at tackling segregation by promoting desegregation
- A stronger linkage with the political priorities identified in the CSRs and the ESF programmes
- A thematic ex ante conditionality (EAC): "a national Roma inclusion strategic policy framework is in place"



General Policy Framework on ESF and Roma inclusion

- Strong monitoring methods as part of the RI EAC
- Increasing capacities of public administration and stakeholders
- RI as part of the transnational cooperation framework



State of play of the programming on Roma inclusion in the ESF

- 1,5 € billion of the ESF total budget on the IP 9 (ii)
- IP 9 (ii) selected by 13 MSs (representing approximately 50% of the estimated Roma population) : AT, BE, BG, CZ, ES, FR, GR, HU, IT, PL, RO, SK
- 35 OPs selected IP 9 (ii)*

** Provisional figures based on the latest data available*



State of play – Ex ante conditionality on Roma Inclusion

- 14 Member States covered
- 9 MSs : EAC fulfilled before the OP/ PA adoption
- 5 MSs have submitted action plans to ensure the fulfilment of the RI EAC by the end of 2016 at the latest



The enforcement of the partnership principle

- Article 5 CPR and the European Code of Conduct on Partnership
- Involvement of partners in the preparation of the PA/ OPs as well as in the implementation of OPs including through the participation in the monitoring committees
- Reinforcing the capacities of partners by using MS TA or making use of the art. 6. 3 ESF

The European Social Fund



THANK YOU FOR YOUR ATTENTION

More information available under:

<http://ec.europa.eu/esf>